

🐾 BRUNSWICK R-II COVID-19 PLAN 🐾



Draft as of August 7, 2020

BRUNSWICK R-II COVID-19 PLAN

Dear Brunswick R-II Families and Staff,

We are anxiously awaiting the return of our students and the start of the 2020-2021 school year! Our goal moving forward is to provide as many face-to-face, in-person instructional days as safely possible. The benefit of direct instruction allows teachers to customize material to meet each child's needs, monitor progress and comprehension, promote critical thinking and decision making while accessing information with a deeper understanding. It is our objective to provide this learning environment while incorporating additional safeguards to protect the safety of our students and staff. During the coming months we would ask for your flexibility and understanding as we work to make this possible.

The following Brunswick R-II COVID-19 Plan has been created with feedback and guidance from district families, Brunswick R-II staff, the Chariton County Health Department, Center for Disease Control, and the Missouri Department of Elementary and Secondary Education.

As information regarding the ever-changing situation of COVID-19 becomes available, please anticipate that we will adapt and update this plan. The information outlined throughout this document is specific to the Brunswick R-II School District and our community. These recommendations are supported by the Chariton County Health Department.

By promoting student opportunities to learn and be successful with proper encouragement and instruction in a safe, orderly environment we are fostering a learning experience that will prepare our Wildcats for the future!

Together in Education,



Cara Engelbrecht
Superintendent



Scott Singleton
High School Principal



Heather Sims
Elementary Principal

Draft as of August 7, 2020

INCREASED SANITATION

- The Brunswick R-II School District COVID-19 Plan is built upon the guidance and recommendations of the Chariton County health officials, the Missouri Department of Elementary and Secondary Education, and the CDC. It is designed to prioritize the health and safety of students and teachers as we reopen the school and deliver instruction for the 2020-2021 school year.
- Our goal is to return our students as close to a traditional educational setting as possible while putting in safeguards for the health and safety of our students and staff.
- This plan is a fluid document that will be updated and adjusted as new information becomes available. Information/updates will be made available through Remind text alerts, the school website (www.brunswick.k12.mo.us), and the Brunswick R-II School District Facebook page.

Our COVID-19 Plan is built around the following foundational priorities:

- Increased Sanitation
- Social Distancing
- Screening
- Protective Measures
- Limited Visitor Access
- Instructional Models Based on Level of Spread
- Alternative Methods of Instruction

COVID-19 **RESOURCES**

- CDC - <https://www.cdc.gov/coronavirus/2019-ncov/index.html>
- DESE - <https://dese.mo.gov/>
- Chariton County Health Department - <http://charitonhealth.org/>
- Carroll County Health Department - <https://www.carrollcohealth.com/>
- DHSS - <https://health.mo.gov/>
- COVID-19 Hotline - 877-435-8411

Draft as of August 7, 2020

INCREASED SANITATION

- Before, during, and after school hours, custodians will clean high touch surfaces throughout the building, including bathrooms, water bottle fill stations, doorknobs, entrance/exit handles, walls, etc.
- Classrooms and other common spaces will be cleaned and disinfected regularly throughout the day.
- Cleaning materials and hand sanitizer will be placed in every classroom. Staff will be expected to support cleaning and disinfecting of classroom surfaces and supplies as needed.
- Hand washing stations with soap and/or hand sanitizer will be available in classrooms, commonly used areas, and at the entrances and exits of the building.
- Touchless refillable water bottle stations will be available for individual drinking containers. Water fountains will be turned off.
- All school buses will be thoroughly sanitized before each route.

Tips to help control the spread of illness.



Wash hands with soap and water for at least 20 seconds. Use alcohol-based hand sanitizer if soap and water are unavailable.



Cough or sneeze into your elbow or tissue. Throw the tissue in the trash. Wash hands or use hand sanitizer.



Clean and disinfect frequently touched objects and surfaces.



Avoid touching your face with unwashed hands.



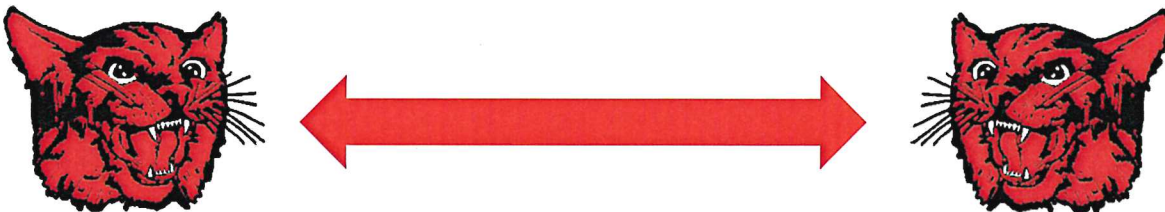
Avoid contact with people who are sick and stay home if you are sick.



Stay healthy.

SOCIAL DISTANCING

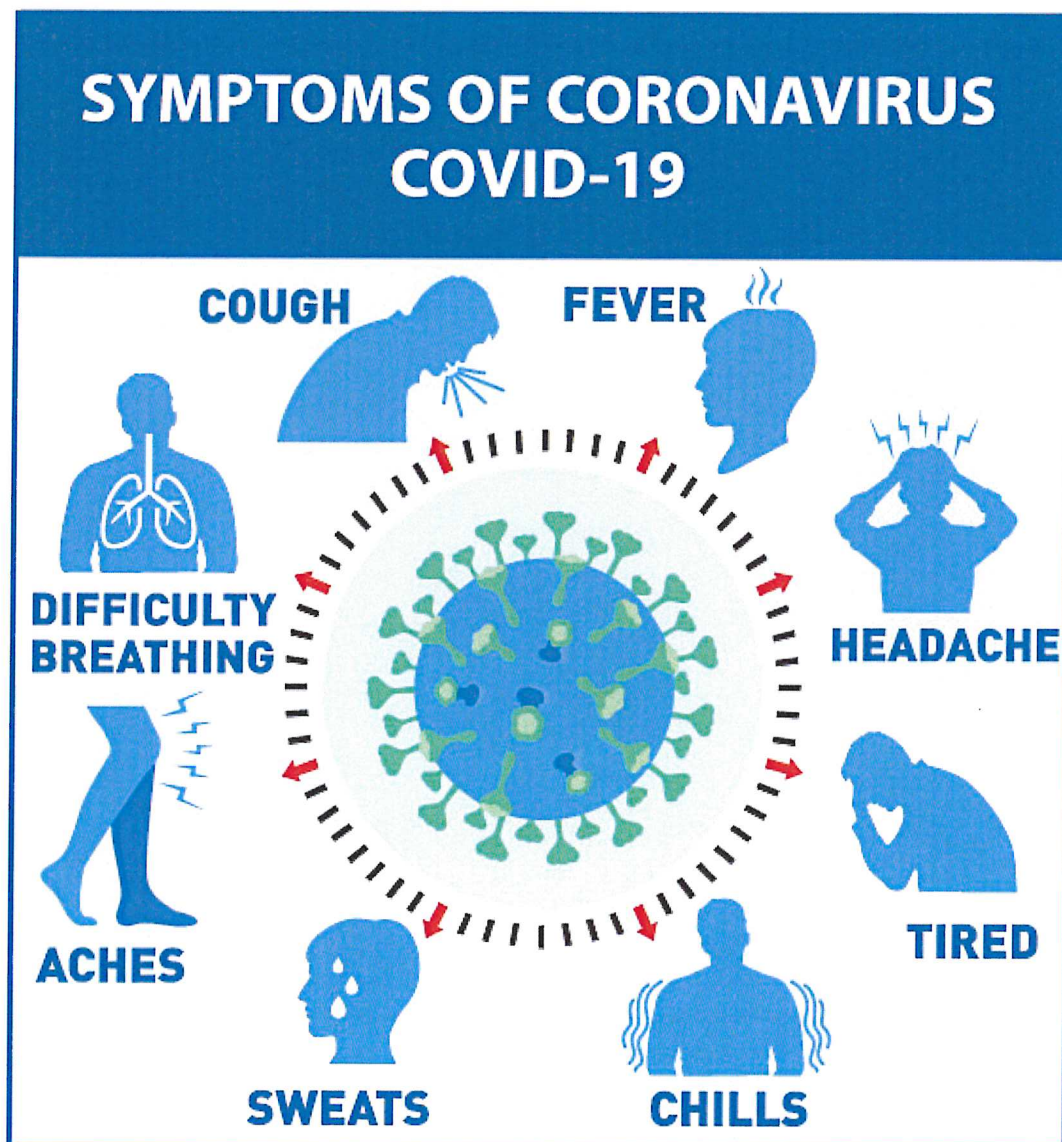
- The goal is to limit exposure to as few other students and staff members as possible. Staff and students must do their very best to maintain as much distance as possible from others.
- Assigned seats will be given in common areas (classroom, lunchroom, bus). This will assist with contact tracing purposes in conjunction with the local health department if needed.
- Students will go immediately to designated areas upon arriving at school and will not congregate in hallways or gym.
- Each student will have their own supplies (pencils, crayons, scissors, glue, etc.). Shared supplies will be eliminated.
- Students will be socially distanced to the greatest extent possible in classrooms.
- The District will continue to offer extracurricular activities while following guidelines established by each organization's governing bodies and local policies.
- Modifications to bus loading and unloading procedures will be made, hand sanitizer will be available to students for boarding and unloading from the bus, and students will be assigned seats to limit exposure.



Draft as of August 7, 2020

SCREENING

- Students and staff who experience symptoms related to COVID-19 should NOT come to school.
- There will be no perfect attendance incentives during the 2020-2021 school year.
- Learning opportunities will be provided for all students who stay home due to illness.



*Symptoms may appear 2-14 days after exposure to the virus.

Draft as of August 7, 2020

SCREENING

- We will look to our teachers to be our strongest line of defense in recognizing student illness. Each teacher will have a no-touch thermometer to utilize at the first sign of concern. Teachers know their students and they will likely recognize if a student is not feeling well. This process will reduce student activity in the hallway and therefore, cut down the transfer and exposure of germs to other students and staff.
- Students or staff who display symptoms of COVID-19 while at school will be moved to a designated area within the school building to minimize contact with others until they go home.
- If the Brunswick R-II School District receives official notification of a student or staff member testing positive for COVID-19, all staff, parents, and students will be notified, but no names will be released.
- If your child was found to be at a sufficient risk for exposure through contract tracing completed by the Chariton or Carroll County Health Department, you will be directly contacted by them.

What is Contact Tracing?	Contact Tracing Involves
Contact tracing is used by health departments to prevent the spread of infectious disease.	Interviewing people with COVID-19 to identify everyone they had close contact with during the time they may have been infectious. According to CDC guidelines, close contact is considered within 6 feet for 15 minutes or more.
In general, contact tracing involves identifying people who have an infectious disease (cases) and people who they came in contact with (contacts) and working with them to interrupt disease spread.	Notifying contacts of potential exposure.
This includes asking people with COVID-19 to isolate and their contacts to quarantine at home voluntarily.	Referring contacts for COVID-19 testing.
Contact tracing is a core-disease control activity. It has been used for decades to slow or stop the spread of infectious disease.	Monitoring contacts for signs & symptoms of COVID-19. Connecting contacts with services they might need during the self-quarantine period.

**Students and staff may be contacted to assist with contact tracing efforts, review assigned seating charts, and to determine which individuals the positive case had contact with while contagious.*

Draft as of August 7, 2020

SCREENING

The return to school guidelines below will be used to allow for a student/staff member to return to school in the ABSENCE of a diagnosis related to COVID-19 such as allergies, strep, ear infection, pink eye, etc.

Persons with illness other than COVID-19:

- Must be fever free a minimum of 24 hours without fever-reducing medication
- AND have an improvement in symptoms



The return to school guidelines below will be used if a student or staff member has a positive COVID-19 test or is diagnosed as a presumptive COVID-19 positive by their health care provider. Brunswick R-II School District will follow local, state, and/or federal guidelines for return to school.

Persons with COVID-19 who HAVE symptoms:

- Must be fever free a minimum of 24 hours without fever-reducing medication
- AND have an improvement in symptoms
- AND be at least 10 days since symptoms first appeared

Persons with COVID-19 who NEVER develop symptoms:

- May return 10 days after the date of their first positive test

Draft as of August 7, 2020

PROTECTIVE MEASURES

- Parents should discuss the importance of social distancing with their children prior to the start of school. It will be difficult to ensure students maintain distance, but it is necessary for staff and students to understand the importance of doing so to help prevent exposure.
- All students and staff will be allowed to wear a mask or face covering.
- All students will be allowed to wear a mask while riding the bus.
- Due to possible medical related concerns, we understand that not all staff and students will be able to wear masks for long periods of time.
- Existing student and staff dress codes will apply to face coverings that are worn.
- The Brunswick R-II School District will follow requirements of local, state, and/or federal health officials.



Draft as of August 7, 2020

LIMITED VISITOR ACCESS

- In order to minimize the exposure of all students and staff to others, the school district will have one point of entry for all parents/visitors during the school day at the new elementary office addition (southwest doors).
- Non-essential visitors and parents will not be permitted beyond the secure vestibule.
- Any essential visitors that enter the building will be required to:
 - Enter at the new elementary office addition (southwest doors)
 - Wear a mask while in the building
 - Have their temperature taken
 - Answer screening questions



Draft as of August 7, 2020

INSTRUCTIONAL LEARNING MODELS BASED ON LEVEL OF SPREAD

LEVEL 1
<ul style="list-style-type: none">• Low to no spread• Face-to-face instruction
LEVEL 2
<ul style="list-style-type: none">• Minimal to moderate spread• Face-to-face instruction• Possible short-term closures (24-48 hours) for cleaning & disinfecting• Short-term AMI (Alternative Methods of Instruction) plans to be utilized. Detailed information on short-term AMI plans will be provided with “Back To School” folders and handbooks.
LEVEL 3
<ul style="list-style-type: none">• Substantial spread• Distance learning• Long-term closures (one week or more)• Long-term AMI-X (Alternative Methods of Instruction-Extension) plans to be utilized. Detailed information on long-term AMI-X plans will be provided with “Back To School” folders and handbooks.

*The level and mode of instruction will be determined based on the amount of spread in the community, throughout the county, and state. The District will maintain communication with local and state health officials to make these determinations.

*The determination on extracurricular activity participation will be made based on recommendations from the organization's governing bodies (National FFA Organization, MSHSAA, etc.), guidance from the Chariton County Health Department and CDC, as well as local school officials and the Brunswick R-II Board of Education.

Draft as of August 7, 2020

ALTERNATIVE METHODS OF INSTRUCTION

Alternative Methods of Instruction “AMI” (Short-term closure):

To be utilized in the event of an unanticipated short-term school closure for exceptional or emergency circumstances which include, but are not limited to, inclement weather, a utility outage, or a short-term outbreak of a contagious disease.

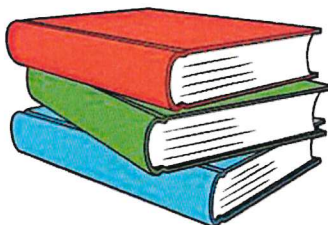
The goal of the AMI plan is the reinforcement of curriculum with learning activities focused on critical learning standards, enrichment activities, or support for further skill development. Consistent practice and exposure to skills without interruption is the most effective way to ensure student understanding and mastery of content knowledge is achieved. AMI allows for the continuation of learning when students miss days of regular instruction. During these times, parents and/or guardians may be asked to oversee or participate in activities and/or lessons with their children and provide school staff with feedback and data relative to the lesson.

Important items to remember about AMI days:

- Students will NOT attend school in person on an AMI day. All students will have assigned work to be completed at home on these days.
- AMI days count as instructional days and do not have to be made up at the end of the school year if students complete assigned work.
- **Students who do not complete the work will be marked absent for the AMI day AND will receive a zero for that assignment.**
- **AMI IS FOR A GRADE!**

We will notify all parents and/or guardians, via text alert, and social media postings in the event of school closures and use of AMI days. In the event of school closing, teachers will be accessible for questions, clarification, and feedback through email or classroom communication platform.

As we implement this new method, we anticipate that we will learn lessons along the way and make necessary adjustments to improve our AMI plan to best meet the needs of our students. If you have further questions or concerns, please do not hesitate to contact the school.



Draft as of August 7, 2020

ALTERNATIVE METHODS OF INSTRUCTION-EXTENSION

Alternate Method of Instruction Extension “AMI-X” (Long-term closure- i.e. COVID-19 Pandemic):

To be utilized in the event of an unanticipated extended school closure such as a medical pandemic.

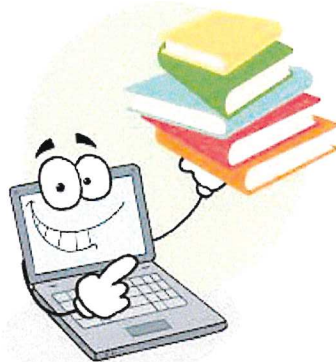
The goal of the AMI-X plan is to embed curriculum with learning activities to promote the continuation of learning standards in each course or grade level when a long-term closure is deemed appropriate. During these times, parents and/or guardians may be asked to oversee or participate in activities and/or lessons with their children and provide school staff with feedback and data relative to the lesson.

Important items to remember about AMI days:

- Students will NOT attend school in person on AMI-X days. All students will have assigned work to be completed at home on these days.
- AMI-X days count as instructional days and do not have to be made up at the end of the school year if students complete assigned work.
- **Students who do not complete the work will be marked absent for the related AMI-X day AND will receive a zero for that assignment.**
- **AMI-X IS FOR A GRADE!**

We will notify all parents and/or guardians, via text alert, and social media postings in the event of school closures and use of AMI-X days. In the event of school closing, teachers will be accessible for questions, clarification, and feedback through email or classroom communication platform.

As we implement this new method, we anticipate that we will learn lessons along the way and make necessary adjustments to improve our AMI-X plan to best meet the needs of our students. If you have further questions or concerns, please do not hesitate to contact the school.



Draft as of August 7, 2020

BRUNSWICK R-II REMIND TEXT ALERTS



Sign up for important updates from BRUNSWICK R-II.

Get information for **Brunswick R-II School District** right on your phone.

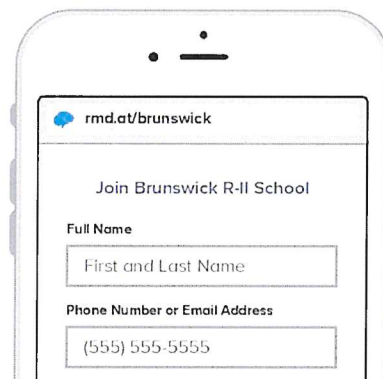
Pick a way to receive messages for **Brunswick R-II School District**:

A If you have a smartphone, get push notifications.

On your iPhone or Android phone, open your web browser and go to the following link:

rmd.at/brunswick

Follow the instructions to sign up for Remind. You'll be prompted to download the mobile app.



B If you don't have a smartphone, get text notifications.

Text the message @brunswick to the number 81010.

If you're having trouble with 81010, try texting @brunswick to (573) 559-3693.

* Standard text message rates apply.



Don't have a mobile phone? Go to rmd.at/brunswick on a desktop computer to sign up for email notifications.

Draft as of August 7, 2020